

**CAMK2B Antibody (monoclonal) (M06)****Mouse monoclonal antibody raised against a partial recombinant CAMK2B.****Catalog # AT1377a****Specification**

---

**CAMK2B Antibody (monoclonal) (M06) - Product Information**

Application	WB, IF
Primary Accession	<a href="#">O13554</a>
Other Accession	<a href="#">NM_172081</a>
Reactivity	Human
Host	mouse
Clonality	Monoclonal
Isotype	IgG1 Kappa
Calculated MW	72678

**CAMK2B Antibody (monoclonal) (M06) - Additional Information****Gene ID** 816**Other Names**

Calcium/calmodulin-dependent protein kinase type II subunit beta, CaM kinase II subunit beta, CaMK-II subunit beta, CAMK2B, CAM2, CAMK2, CAMKB

**Target/Specificity**

CAMK2B (NP\_742078, 405 a.a. ~ 502 a.a) partial recombinant protein with GST tag. MW of the GST tag alone is 26 KDa.

**Dilution**

WB~~1:500~1000

IF~~1:50~200

**Format**

Clear, colorless solution in phosphate buffered saline, pH 7.2 .

**Storage**

Store at -20°C or lower. Aliquot to avoid repeated freezing and thawing.

**Precautions**

CAMK2B Antibody (monoclonal) (M06) is for research use only and not for use in diagnostic or therapeutic procedures.

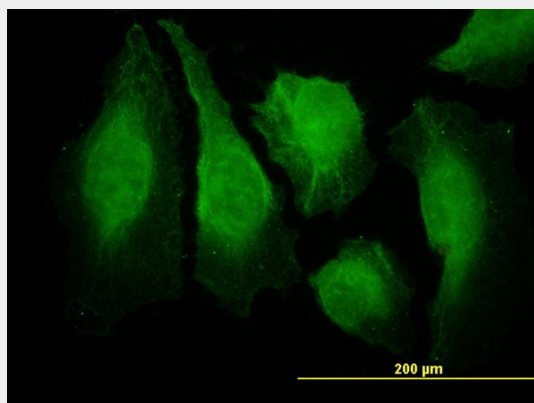
**CAMK2B Antibody (monoclonal) (M06) - Protocols**

Provided below are standard protocols that you may find useful for product applications.

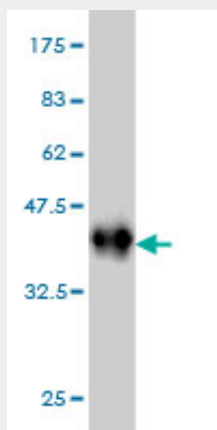
- [Western Blot](#)
- [Blocking Peptides](#)

- [Dot Blot](#)
- [Immunohistochemistry](#)
- [Immunofluorescence](#)
- [Immunoprecipitation](#)
- [Flow Cytometry](#)
- [Cell Culture](#)

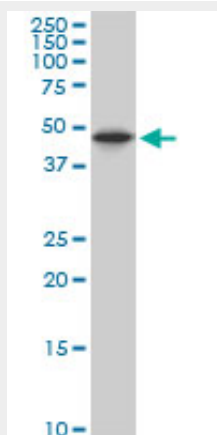
#### **CAMK2B Antibody (monoclonal) (M06) - Images**



Immunofluorescence of monoclonal antibody to CAMK2B on HeLa cell. [antibody concentration 25 ug/ml]



Antibody Reactive Against Recombinant Protein. Western Blot detection against Immunogen (36.52 KDa) .



CAMK2B monoclonal antibody (M06), clone 6D6. Western Blot analysis of CAMK2B expression in HeLa((Cat # AT1377a )

#### **CAMK2B Antibody (monoclonal) (M06) - Background**

The product of this gene belongs to the serine/threonine protein kinase family and to the Ca(2+)/calmodulin-dependent protein kinase subfamily. Calcium signaling is crucial for several aspects of plasticity at glutamatergic synapses. In mammalian cells, the enzyme is composed of four different chains: alpha, beta, gamma, and delta. The product of this gene is a beta chain. It is possible that distinct isoforms of this chain have different cellular localizations and interact differently with calmodulin. Eight transcript variants encoding eight distinct isoforms have been identified for this gene.

#### **CAMK2B Antibody (monoclonal) (M06) - References**

Personalized smoking cessation: interactions between nicotine dose, dependence and quit-success genotype score. Rose JE, et al. Mol Med, 2010 Jul-Aug. PMID 20379614. Pharmacogenetics of antipsychotic response in the CATIE trial: a candidate gene analysis. Need AC, et al. Eur J Hum Genet, 2009 Jul. PMID 19156168. A common variant in DRD3 receptor is associated with autism spectrum disorder. de Krom M, et al. Biol Psychiatry, 2009 Apr 1. PMID 19058789. Motor protein-dependent transport of AMPA receptors into spines during long-term potentiation. Correia SS, et al. Nat Neurosci, 2008 Apr. PMID 18311135. Genetically encoded probe for fluorescence lifetime imaging of CaMKII activity. Kwok S, et al. Biochem Biophys Res Commun, 2008 May 2. PMID 18302935.